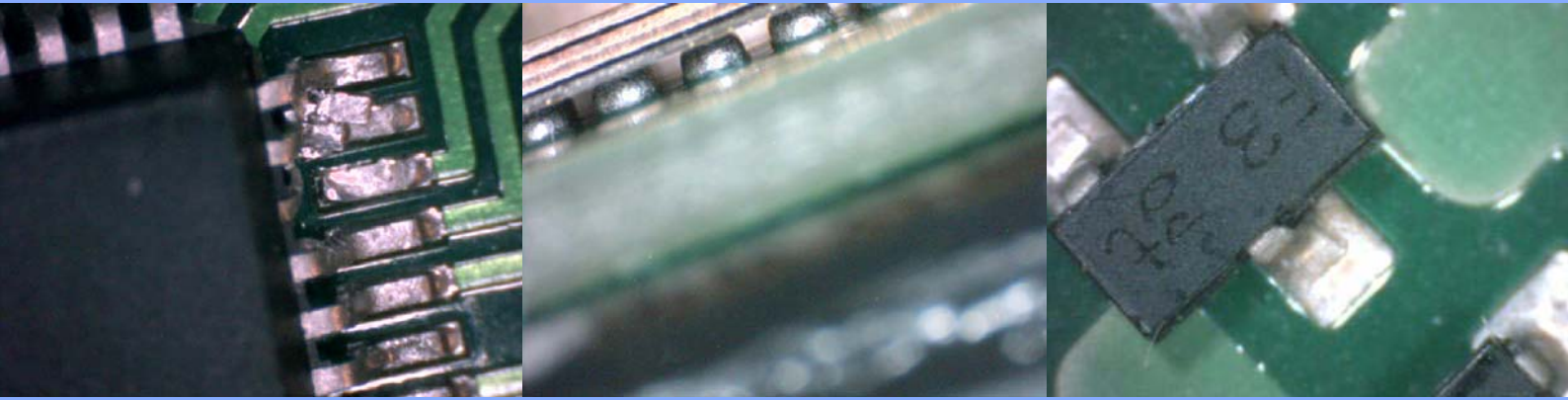


# YesTek Limited

## Yield Enhancement Systems



**Optical  
Inspection**  
**USB Video Microscope**

# YesTek Ltd - USB Video Microscope

## D-Scope digital microscope that fits in the palm of your hand

The D-Scope handheld digital microscope combines a digital camera, precision optics and LED lighting in a system that fits in the palm of your hand. The 10 - 200X magnification lets you zoom in on the fine details of PCB components and solder fillets as well as many other non-electronics applications such as entomology, forensics, geology, textiles, or anything else too small to see. Simply placing the D-Scope over the object gives you the comfort of viewing the image on your computer screen, instead of straining to look into a tiny eyepiece. Capture images or movies, easily add labels, make measurements and even draw right onto live video images when presenting. The D-Scope connects to your computer's USB port where it's always ready to use, making it totally portable. The D-Scope is so flexible and competitively priced that electronics users can even place a system complete with a PC in several inspection cells for the price of a single older type system. The D-Scope really does give you the opportunity to put the world under the microscope.

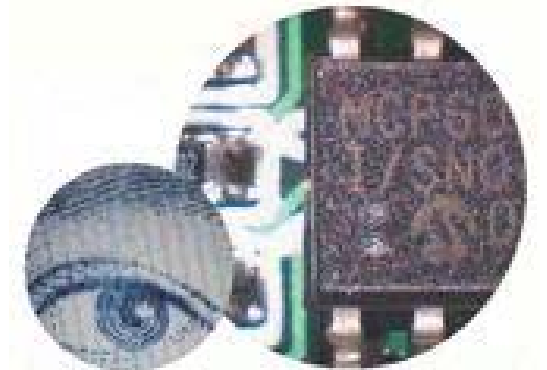


### Key Features

- View live images on the computer screen
- 10 -200x magnification.
- Completely portable with a laptop computer.
- Save still and time lapse images as well as video.
- Labels, markers, time stamps, measurement.
- Draw directly on the live image.

### Applications

- Manufacturing (Electronics, Surface Finish).
- Education (Biology, Life Sciences, Geology).
- Backyard Science (Bugs, Plants, Fossils).
- Collectors (Stamps, Coins, Cards, Artwork).
- Forensics (Crime Scene, Documents).



### Software Features & Options

- Display live video.
- Capture still images, movies and time lapse sequences.
- Interactively adjust camera brightness, contrast and colour.
- Live digital zoom up to 4x.
- Resizable image window - up to full screen.
- Measure on the live image using multiple measurement tools.
- Calibrate for different magnifications.
- Add labels and markers over the live image.
- Draw freehand on the live image.
- Place a time stamp anywhere on the image.

YesTek Limited  
**Yield Enhancement Systems**  
Unit P Minerva Works  
Johnstone  
Renfrewshire  
PA5 8HP UK  
Tel: +44 (0) 1505 321528  
[info@yestek.co.uk](mailto:info@yestek.co.uk)  
[www.yestek.co.uk](http://www.yestek.co.uk)